

SPEC FRONT BUMPER

2024+ TOYOTA TACOMA

FBTT1-09



TOOLS REQUIRED

- Measuring tools
- 10mm, 17mm, 21mm, 22mm Sockets
- #3, 4 & 5 Allen tools
- Trim pry tool
- Preferred cutting tool (grinder, hand saw, Dremel style tool)
- File/Rasp/Sand Paper
- Safety Glasses
- Gloves

SKILL LEVEL

- Novice/Intermediate
- 2 persons

Little skill level required, additional help will be required.

TIME REQUIRED

- 6.5 Hours

Time to install this should only take four to six and a half hours.

WARNINGS/CAUTIONS BEFORE STARTING INSTALLATION

Before you install this kit — Read and understand all instructions, warnings, cautions, and notes contained in this installation instruction guide. Consult your vehicle owner's manual for proper disconnection of electrical and lifting of vehicle if required for installation of this product.

This install may require some technical skills and knowledge of basic mechanical work. If you do not feel that you are capable of performing this install please take this product to a trained professional.

After reading this guide please contact us with any questions or concerns before installing product.
Customer Service: 855-680-9595

DV8 Offroad is not responsible for any bodily injury or harm to you or your vehicle as a result of an improper install.

Proper installation of this kit required knowledge of the factory recommended procedures for removal and installation of original equipment components. We recommend that the factory shop manual and any special tools needed to service your vehicle be on hand during the installation. Installation of this kit without proper knowledge of the factory recommended procedures may affect the performance of these components and the safety of the vehicle

- Always wear eye protection when operating power tools

Inspect all contents of this package to make sure product is not damaged and all installation hardware has been included. If parts are missing from kit, please be prepared to provide the following information

1. Name of purchase location
2. Bar Code on side of box
3. Date above bar code
4. Date inside box cover

INSTALLATION MANUAL

Begin by unpacking all items and inspecting for missing pieces or damage. If you have any concerns, please contact the company the product was purchased from. Extra hardware may be included with the product.

HARDWARE INCLUDED

(14) M14x35mm Bolts	(4) M6 Flat Washers
(14) M14 Lock Nuts	(8) M12x35 Hex Bolts
(28) M14 Flat Washers	(8) M12 Nylon lock Nuts
(8) M8x20mm Bolts	(16) M12 Large Flat Washers
(4) M8 Nylon Lock Nuts	(2) M8x25 Allen Head Bolts
(12) M8 Flat Washers	(2) M5x.30 Allen Head Bolts
(2) M6x20 Allen Head Bolts	(2) M5 Nylon Lock Nuts
(2) M6 Nylon Lock Nuts	(4) M5 Flat Washers



STEP 1 | Prepare the bumper to take measurement for the necessary bumper cut by placing masking tape below the bumper sensors as shown.



STEP 2 | Place additional pieces of tape as shown following the body lines. These pieces will help ensuring the measurement are accurate as possible.



INSTALLATION MANUAL



STEP 3 | Measuring from the top of the lower valance down, make a mark at $1 \frac{1}{4}$ inches.



STEP 4 | Measuring from the top of the tap line down, make a mark at $6 \frac{7}{8}$ inches.



INSTALLATION MANUAL

STEP 5 | Measuring from the bottom of the sensor cut out down, make a mark at $2\frac{1}{8}$ inches.



STEP 6 | Measuring from the body line down, while using the tape line to ensure you the measurement is straight with the vertical body line, make a mark at $7\frac{3}{4}$ inches.



STEP 7 | Measuring from the upper corner where the bumper meets the fender, below the headlight. Make a mark at $17\frac{7}{8}$ inches



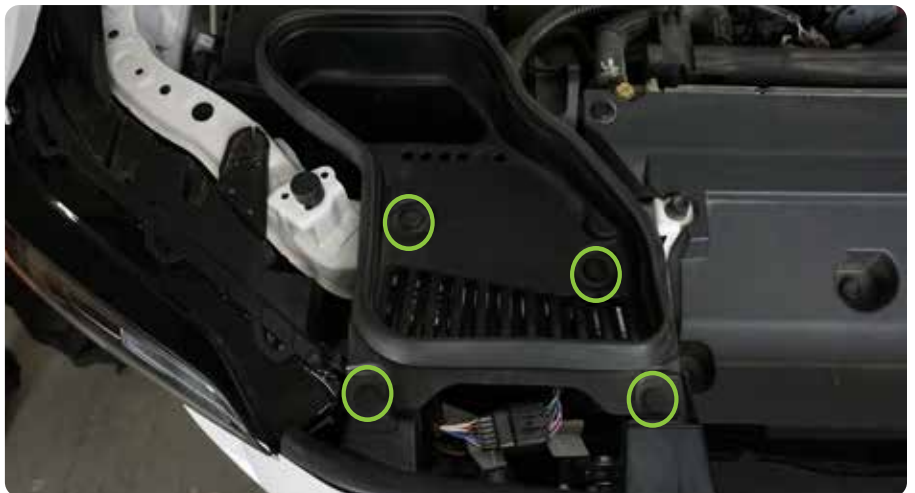
INSTALLATION MANUAL

STEP 8 | Complete steps 1-7 on the driver side. Once all measurements are made removal of the front bumper/ grille assembly can begin.



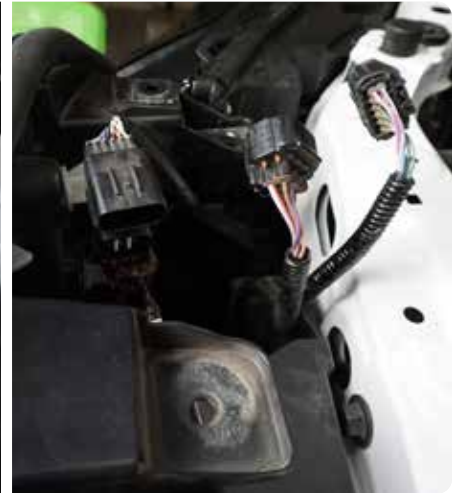
STEP 9 | Remove the under hood radiator support cover and fresh air intake duct.

Depress/push down on the center of the push pins to unlock the pin. Use a trim tool to pry up the push pins to remove.



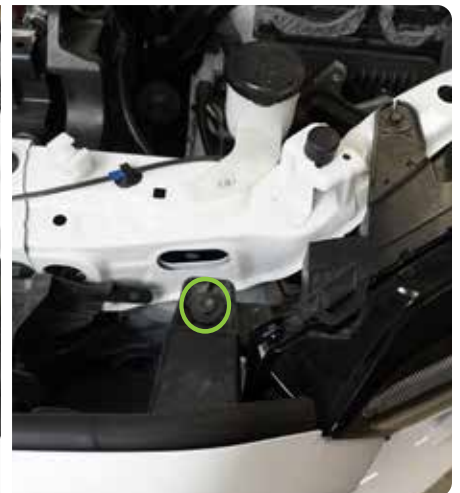


STEP 10 | Disconnect the 2 electrical plugs connected to the grille.



STEP 11 | Use a 10mm socket to remove the (3) bolts securing the top of the grille to the vehicle.

Note: Two outside bolts near headlights shown in image.





STEP 12 | Use a 10mm socket to remove the (4) bolts on each side securing the inner fender to the front bumper.



STEP 13 | Use a trim pry tool to remove the (2) push pins on each side securing the factory flare to the bumper (If equipped).

With a firm grip pry the front of the factory fender flare away from the vehicle. Be careful not to brake the factory clips on the fender flare.



INSTALLATION MANUAL

STEP 14 | Use a 10mm socket to remove the bolt securing the bumpers lower portion to the crash bar on each side.



STEP 15 | Pull the front of the fender flare down to expose the Phillips head screw securing the side of the front bumper to the vehicle. Use a Phillips head screw driver to remove the screw from each side.



STEP 16 | Use a 10mm socket to remove the (2) bolts securing the lower bumper valance.

Use a 12mm socket to remove the (4) bolts securing the factory front skid plate.



INSTALLATION MANUAL

STEP 17 | Use a 17mm socket to remove the factory tow hooks.



STEP 18 | Lift the grille/front bumper up and away from the vehicle.

There are various clips holding the front on, take your time to release all of them.

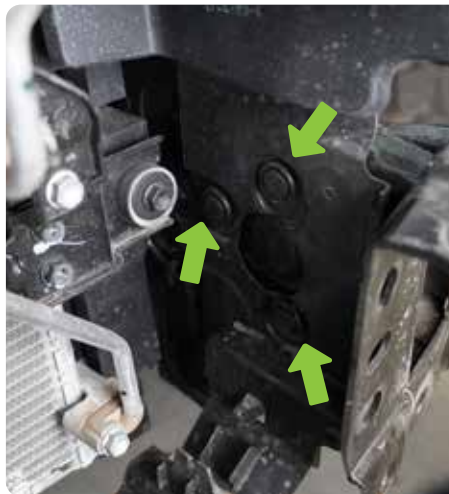


STEP 19 | Use a 17mm socket to remove the (8) bolts securing the crash bar.



INSTALLATION MANUAL

STEP 20 | Using a trim clip tool, remove the push clips on each side that secure the lower bumper valance.



INSTALLATION MANUAL



STEP 21 | With the bumper/grille assembly removed from the vehicle we can now assemble the bumper.

If you are planning to run a light bar, install the light bar now.

Mount the provided light brackets onto your chosen light bar using the hardware provide with the light bar.

For this install we chose the DV8 20 Elite light bar with halo. **Part # BE20SW105W-H**



STEP 22 | Using a #4 allen tool and 10mm socket or wrench, mount the light bar into the DV8 front bumper using the provide M6 hardware.





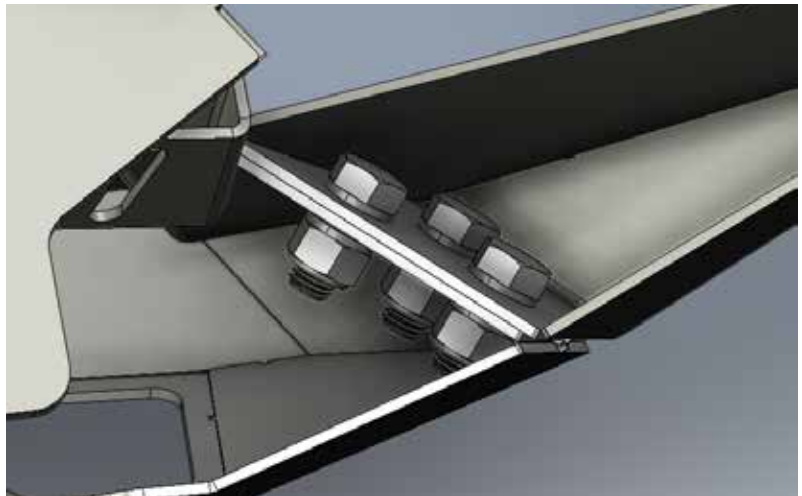
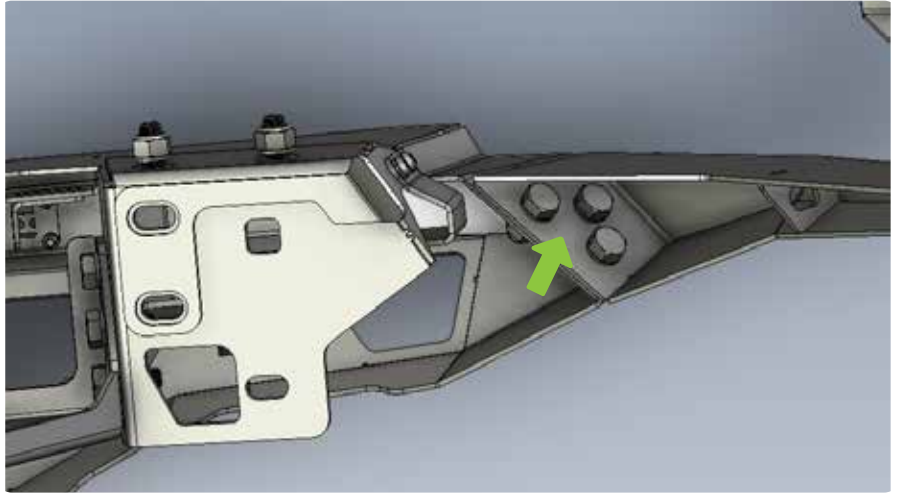
STEP 23 | If you are planning to run a winch, install the provided winch plate at this time. Using a 21mm/22mm socket and the provided M12 hardware secure the winch plate in place.

Use (2) M12 flat washers per M12 bolt. One washer for the nut side and one for the bolt side.



INSTALLATION MANUAL

STEP 24 | Using a 21 & 22mm socket or wrench with the provide M12 hardware secure the wings to the bumpers center section.



INSTALLATION MANUAL

STEP 25 | Mount your chosen winch onto the winch plate using the hardware provided with the winch.

Using an #5 allen tool and 13mm socket or wrench loosely mount the skid plate to the bumper using the provide M8 allen head hardware and M8 nylon locking nuts. (Not shown)

For this install we chose the DV8 12K winch. Part # WB12SR. This bumper is also compatible with winch part # WB12K-SR



STEP 26 | If you are planning to run pod lights, mount the provided POD light bracket to the bumper at this time using a #5 allen tool and (4) of the provided M8 allen head bolts.

Use (1) flat washer per allen head bolt.



INSTALLATION MANUAL

STEP 27 | Mount your chosen pod light using the hardware provided with the light.

For this install we chose DV8 Elite 3" Pod lights. **Part # BE3EW40W**



STEP 28 | With assistance mount the bumper to the vehicle. Using a 21mm and 22mm socket or wrench with the provided M14 bolts, loosely secure the bumper to the vehicles frame rails.

Each frame mount will use (5) M14 Bolts. The factory frame rail stud will not receive a nut.

***Note:** If you are running a winch or accessory lighting we recommend routing your wiring at this time.*



INSTALLATION MANUAL

STEP 29 | Using factory hardware, secure the skid plate to the vehicles front cross member.

Note: Hardware shown is hardware provided with SPTT1-09.



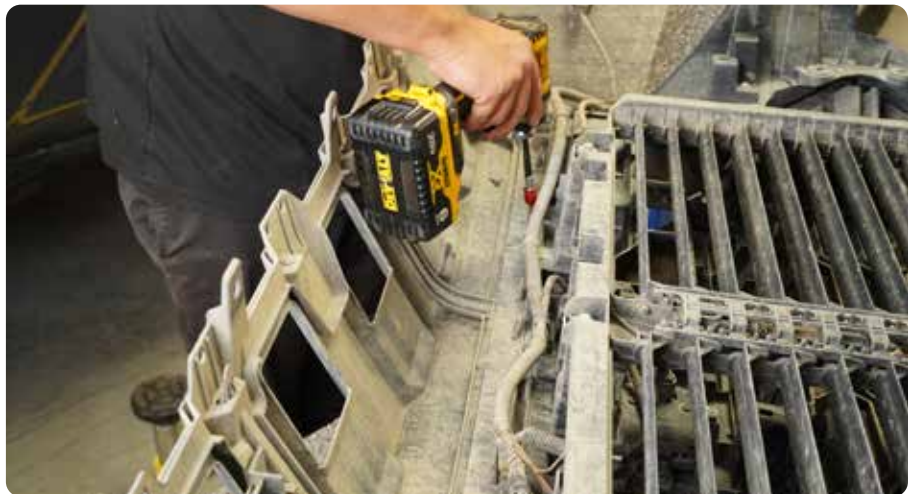
STEP 30 | Using a #5 allen tool and a 13mm socket or wrench, secure the (4) M8 bolts that secures the skid plate to the bumper.



INSTALLATION MANUAL

STEP 31 | Lay the bumper and grille assembly face down on to a cover work bench.

Using a phillips head screw driver, remove the bolts that secure the bumpers lower fascia to the assembly.



STEP 32 | Using a trim tool, unclip the (10) clips that secure the lower fascia.



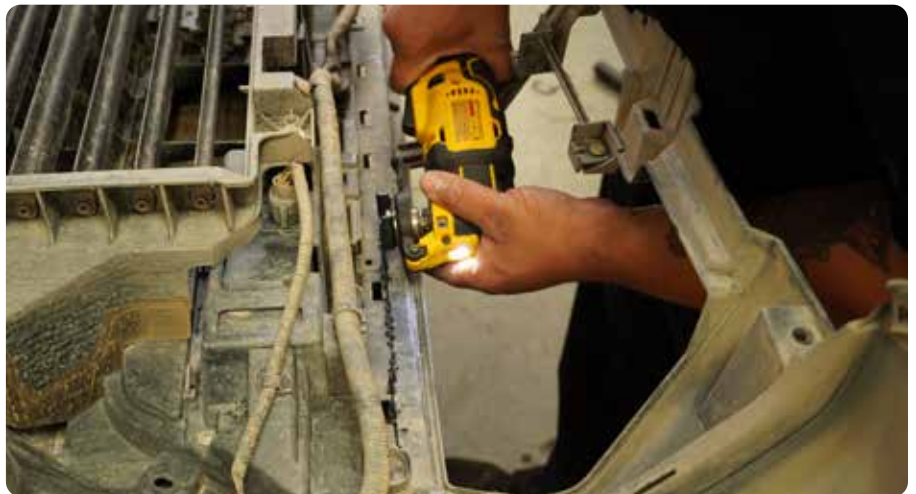


STEP 33 | You will make your first cut into the bumper following just below the clip cut outs.



INSTALLATION MANUAL

STEP 34 | *Tech Tip: Before cutting place a spacer between the bumper pieces so that the face of the bumper is not cut.*



INSTALLATION MANUAL

STEP 35 | Continue the cut the down the panel as shown along the edge on both sides.



INSTALLATION MANUAL

STEP 36 | Flip the bumper/grille assembly face up. Using your preferred cutting tool cut the bumper following the line previously drawn.

We recommend cutting 1/4 inch below the cut line and trimming up as needed to obtain the best fit.



INSTALLATION MANUAL

STEP 37 | Reinstall the bumper/grille assembly in reverse order it was removed.

Test the over all fit after the cut. Continue trimming the bumper a little at a time as needed.

We left a 1/8 inch gap between the bumper/grille assembly and the DV8 bumper to account for body flex.



STEP 38 | Trim the fender flare as needed to match the bumper cut.

Use high grit sand paper or a file to even out any cut rough edges.



INSTALLATION MANUAL

STEP 39 | Double check that all hardware is secure and all electrical plugs and been reconnected.

Congratulations, installation of the DV8 Tacoma Spec Series front bumper is complete.

